



Shenzhen Company

SHENZHEN ZHUOMAO TECHNOLOGY CO., LTD.

Factory Address: F3 Building 11, Longwangmiao Industrial Zone,
Baishixia Community, Fuyong, Bao'an, Shenzhen.

TEL: +86-755-29929955 29929956

FAX: +86-755-29929953

Contact: Jackie Tian

Mobile Phone: 0086 139 2345 8440

E-mail: Jackie@zhoumao.com.cn

<http://www.seamarkzm.com>

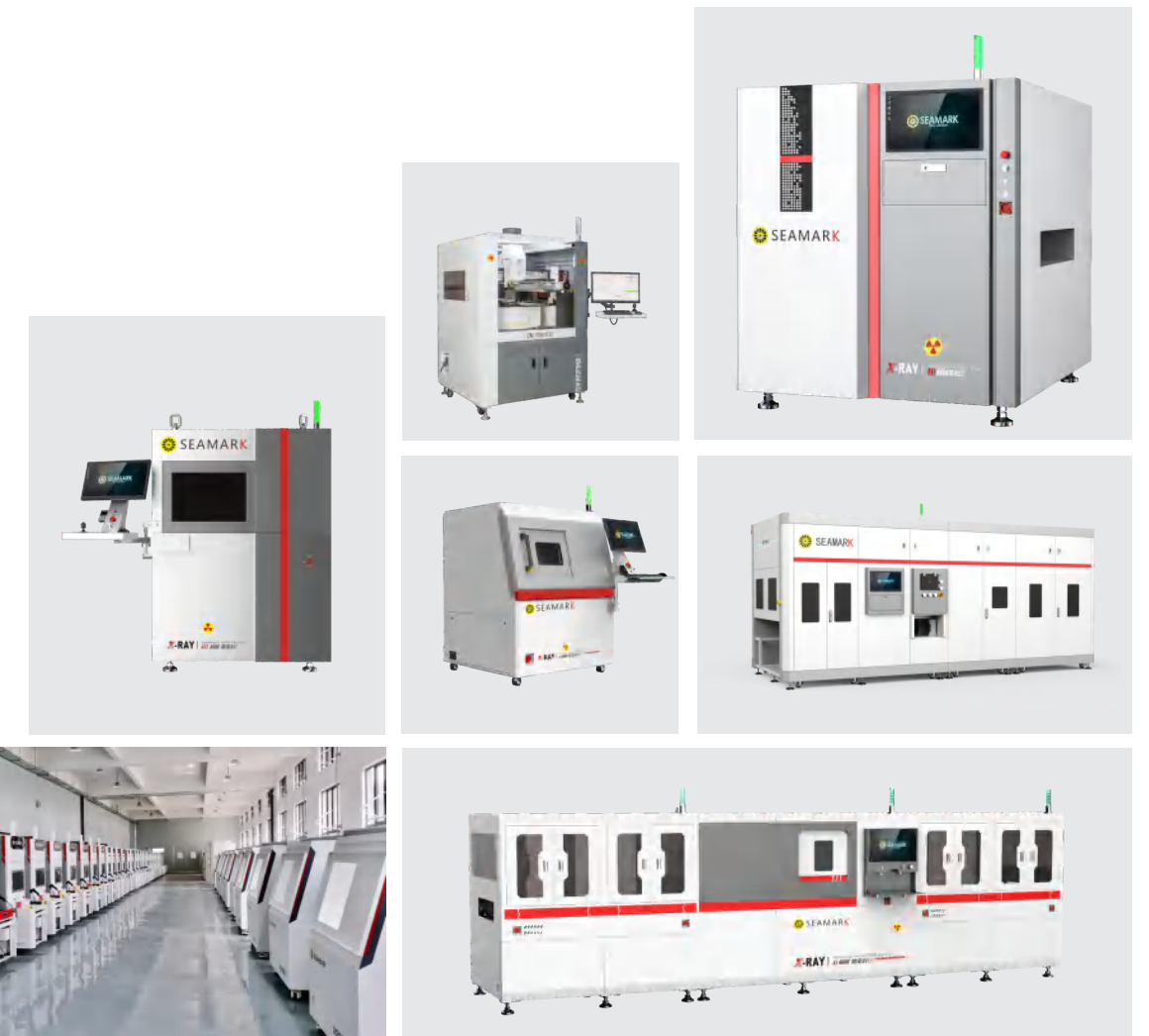
Hongkong Company

Seamark Hongkong Limited

As the products are constantly improved and
updated, this brochure is for reference only.

The company reserves the final interpretation right.

Ver: ZM-CY01-A1(202506)



Industrial CT X-Ray Inspection Equipment

Automated Optical Inspection Equipment

X-Ray Counting Equipment

Intelligent BGA Rework Equipment

One-stop Solution

SHENZHEN ZHUOMAO TECHNOLOGY CO., LTD.

SEAMARK HONGKONG LIMITED

<https://www.seamarkzm.com/products/zm-r8650c-fully-automatic-bga-rework-station/>

卓尔不凡 耕深业茂

Seamark

ZM

X-Ray Counting Machine/X-Ray Inspection Equipment
Multifunctional BGA Rework Equipment
Lithium Battery Inspection Equipment
3D/CT Inspection Equipment
One-stop Service



Company Profile

Shenzhen Zhuomao Technology Co., Ltd. (also known as "Seamark") was established in 2005 and is a national high-tech enterprise that integrates research and development, production, and sales. It is also a national key "little giant" enterprise specializing in precision, innovation, and novelty. The company has been deeply involved in the industry for more than 20 years and has been committed to providing advanced Industrial CT, X-Ray Inspection Equipment, AOI/SPI, X-Ray Counting Machine, and Intelligent BGA Rework Equipment for industries such as electronic manufacturing, integrated circuits, semiconductors, new energy batteries, and industrial castings.

The company adheres to independent innovation of core technologies, has a professional R&D team, has established a postdoctoral innovation practice base, and has carried out industry university research technology cooperation with research institutions such as Tsinghua University, the Institute of Advanced Technology of the Chinese Academy of Sciences, and Shenzhen University. Currently, it has obtained more than 300 patents and qualification certificates, undertaken the research and development of multiple national key special projects, and has been approved as the Engineering Technology Research Center for Industrial X-ray Intelligent Inspection Equipment in Guangdong Province.

Zhuomao Technology is headquartered in Shenzhen and has established branches and offices in Beijing, Suzhou, Xiangyang, Tianjin, Chongqing, Xi'an, Taiwan, Bangkok and other places, with a complete after-sales service system. Our products cover more than 100 countries and regions worldwide, and have become the preferred trusted brand for over 100,000 users worldwide!



Milestones

Cooperative Partner

2025

- In 2025 Zhuomao Technology celebrates its 20th anniversary
- In 2025 won the Guangdong Industrial X-ray Intelligent Inspection Equipment Engineering Technology Research Center

2024

- In November 2024, a joint laboratory was established with the Shenzhen Advanced Institute of the Chinese Academy of Sciences
- Pass the mid-term acceptance and results release of the national key R&D project in November 2024
- The East China (Suzhou) Exhibition Center will be officially opened in July 2024
- In June 2024, the company will be awarded the title of "Little Giant" with continued financial support for specialized, sophisticated and innovative enterprises
- In March 2023, the company will expand its scale and move from Fuhai Huaide Cuihai Industrial Park to Buildings 10 and 11 of Fuyong Longwangmiao Industrial Park.
- In February 2023, it was awarded the Postdoctoral Innovation and Practice Base by the Shenzhen Human Resources and Social Security Bureau

2022

- In 2022, awarded as a national-level "Little Giant" enterprise by the Ministry of Industry and Information Technology
- In December 2021, won the "Shenzhen Advanced Manufacturing Intelligent Equipment Field Pioneering Bull Award" issued by Shenzhen Electronic Equipment Industry Association for the Socialist Pilot Demonstration Zone
- In December 2021, the industrial CT/3D X-ray inspection system was awarded the "China SMT Innovation Achievement Award" by the Guangdong Institute of Electronics

2020

- In January 2020, Zhuomao was awarded the "Shenzhen Equipment Industry-Leading Enterprise in SMT Segmentation" by Shenzhen Electronic Equipment Industry Association
- In January 2020, the independently developed X-ray Inline Counting Machine was awarded the "China SMT Innovation Achievement Award" by the Guangdong Electronics Society

2019

- In 2019 officially became a qualified supplier of Foxconn
- In 2019 officially became a qualified supplier of Huawei
- In July 2019 Strategic cooperation with Henan University of Science and Technology to create a post-doctoral workstation
- In February 2019, Hubei Zhuomao Intelligent Technology Co., Ltd. was established and formally settled in Hubei Dongjin New District Intelligent Equipment High-Tech Industrial Park and put into production
- In January 2019 passed the intellectual property management system certification

2018

- In 2018 officially became a qualified supplier of ZTE
- In December 2018, Mr. Wen Quan, the general manager of Zhuomao, was awarded the "Leading Talent" Award for the 40th Anniversary of the Reform and Opening-up by the Shenzhen Electronic Equipment Industry Association
- In December 2018, the 3D X-ray Inspection Equipment was awarded the "China SMT Innovation Achievement Award" by the Guangdong Electronics Society
- In September 2018, the Micro-focus X-ray Inspection Equipment was granted the exemption management certification by Guangdong Environmental Protection Department
- In October 2017, Zhuomao won the "2017 Guangdong's most competitive enterprise" award

2016

- In October 2016, the laser screen repair equipment won the key support project of "SME Technology Innovation" by Baoan Science and Technology Bureau
- In December 2015, Zhuomao was awarded the title of "2015 Shenzhen Enterprise Cultural Construction Excellent Unit" by the Shenzhen Enterprise Federation
- In November 2015, the general manager Wen Quan was awarded the title of "Top Ten Outstanding Young Persons in Xixiang, Bao'an District"
- In September 2015, the whole relocation from Xixiang Sanwei Donghua Industrial Park to the 10th building of Fuyong Huaide Cuihai Industrial Park, and held the "10 Anniversary Celebration" event
- In June 2015, Zhuomao won the "2014 Guangdong Integrity Demonstration Enterprise" certificate issued by the Guangdong Federation of Enterprises

2014

- In October 2014, Zhuomao won the title of "2014 Deloitte China-Shenzhen High-Tech, High-Growth Top 20 Enterprises"
- In August 2014, it won the "2014 Electronic Equipment Industry Design Red Sail Award" issued by the China Electronic Equipment Industry Expo Organizing Committee
- In August 2013, the general manager Wen Quan was awarded the title of "Outstanding Entrepreneur of China Electronics Manufacturing Industry" by the Guangdong Electronics Society
- In August 2013, Zhuomao won the "China Electronic Equipment Most Innovative Ability Award" issued by the China Electronic Equipment Industry Expo Organizing Committee
- In May 2013, it obtained the "Integrity AAA" certification from the China SME Association and the Ministry of Commerce
- In January 2013, Zhuomao became a qualified supplier of "Epson Technology (Shenzhen) Co., Ltd."
- In January 2013, the first fully automatic BGA Reballing machine in China was born and successfully applied for invention patent and obtained authorization
- In August 2012, Suzhou Zhuomao Optoelectronics Technology Co., Ltd. was established
- In December 2011, Zhuomao won the title of the ninth "Most Potential Shenzhen Famous Brand Enterprise"
- In October 2011, Zhuomao obtained the certificate of "National High-tech Enterprise"
- In March 2011, Zhuomao became a qualified supplier of "Chongqing Space Rocket (Bashan Instrument)"

2010

- In July 2010, Zhuomao registered the trademark "Seamark ZM", and officially became a strategic partner with DIC Corporation of Japan
- In March 2010, it was all selected as a qualified supplier by well-known domestic brands such as Skyworth, Changhong, and Hisense
- In January 2010, it was awarded the title of "2009 Civilized and Honest Business Household" by the Shenzhen Industrial and Commercial Bureau
- In Dec. 2009, Zhuomao was recognized as "Shenzhen Dual Software Enterprise""
- In November 2009, Zhuomao passed ISO9001: 2008 quality management system certification
- In October 2009, Zhuomao Technology (Hong Kong) Co., Ltd. was established

2008

- In July 2008, Zhuomao successfully passed the international CE certification
- In March 2008, Zhuomao established a cooperative relationship with Shenzhen Graduate School of Tsinghua University
- In December 2007, Zhuomao became the designated supplier of Taiwan Gigabyte Technology Rework Equipment
- In April 2006, Zhuomao participated in Nepcon for the first time, and cooperated with well-known IT companies such as Lenovo, Tongfang, TCL, etc.
- In March 2006, the first optical alignment rework station ZM-R680C entered the Tianjin market, Tianjin Daisuke Electronics Co., Ltd. (Korean-owned enterprise)

2005

- In 2005, Shenzhen Zhuomao Technology Co., Ltd. was formally established



The ranking is in no particular order. Thank you for your support !

<https://www.seamarkzm.com/products/zm-r8650c-fully-automatic-bga-rework-station/>



Honors & Qualifications

Corporate Philosophy

Honors



Qualifications

Trademark Registration



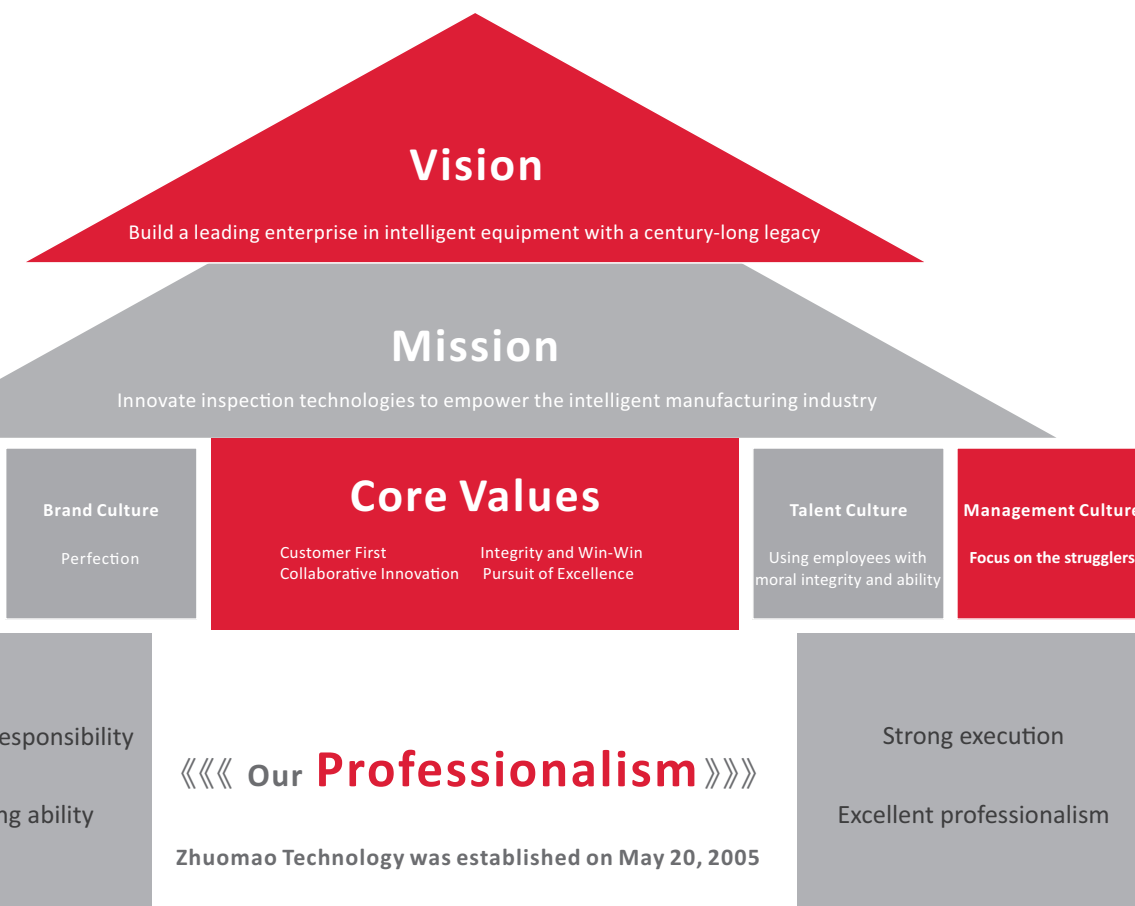
Software Copyright



Patent



System Certification



Intelligent BGA Rework Equipment

- Fully Automatic Vision BGA Rework Station
- Fully Automatic High-End BGA Rework Station
- Large BGA Rework Station
- Intelligent BGA Rework Station
- Desoldering and Tin Removal Rework Equipment
- Tin Removal and Reballing Automated Rework Line
- Tin Removal and Reballing Rework Equipment

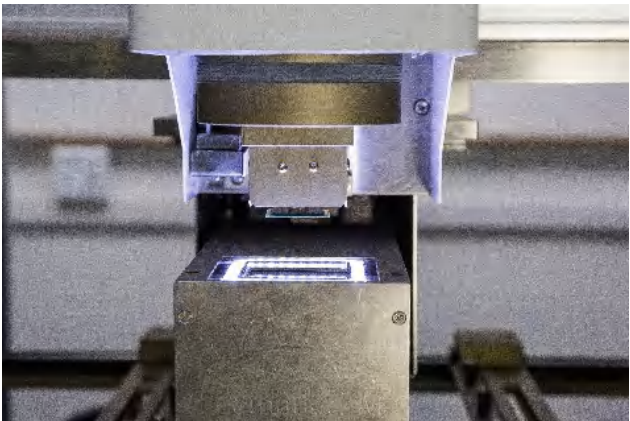
R8650C

Intelligent BGA Rework Station

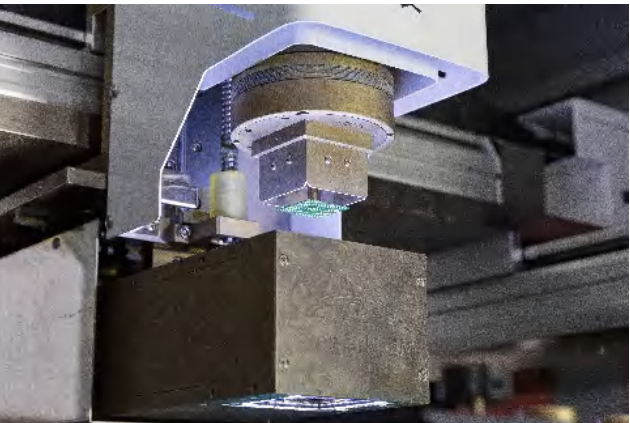
R8650C is a BGA rework station with automatic visual alignment. It is suitable for automatic rework of various SMD devices on large PCB boards (such as 5G communication boards). It can realize automatic visual placement, automatic soldering, full automatic rework Automatic desoldering function. It can be connected with MES software (optional) to realize the functions of temperature curve analysis with S/N as the traceability condition.



Precise Visual Alignment

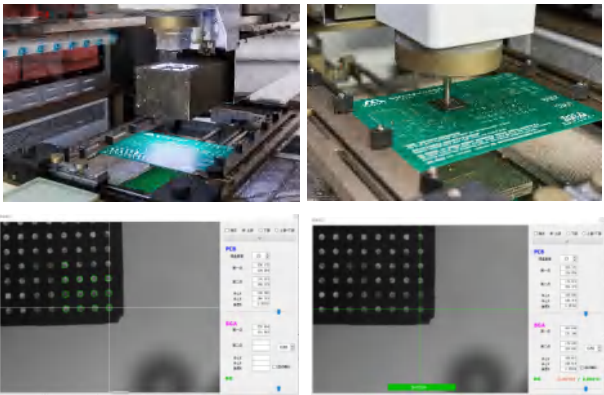


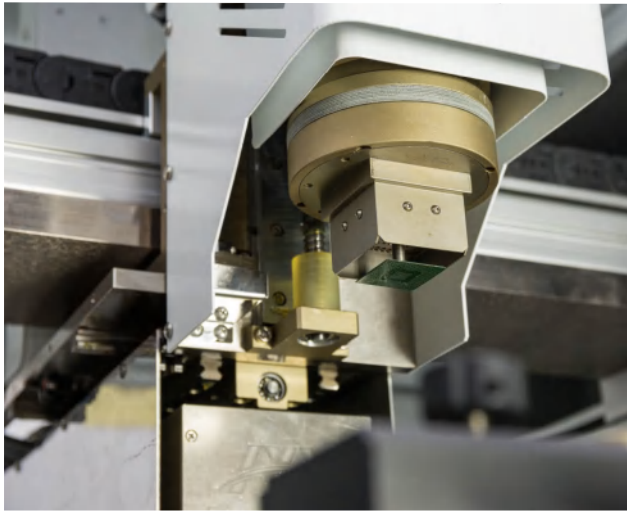
A set of high-definition industrial cameras used in combination, with repeatable placement accuracy of $\pm 0.025\text{mm}$. The 2-megapixel high-definition industrial camera system is designed for precise measurement and positioning of chips. The self-developed vision software system automatically corrects alignment and angles, with high-definition image display.



ESD Ionizer

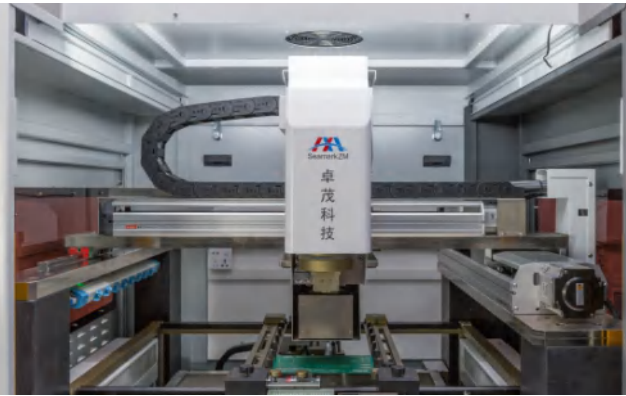
Equipped with ionizer, which effectively eliminates static electricity on the board and protects the product.





Precise Motion Platform

It adopts industrial PC and servo motion control system to accurately control the X / Y / Z four-axis gantry structure to operate fully automatically and independently. It adopts a grinding marble platform, the visual accuracy can reach $\pm 0.01\text{mm}$.

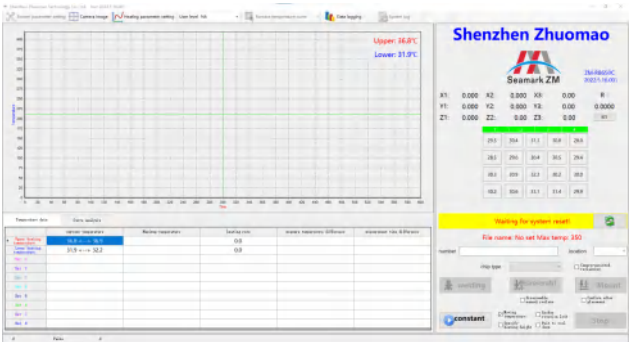


Multifunctional Control Feature

The self-developed software system realizes fast positioning and stable temperature curve (with curve analysis function), easy operation and setting, and can automatically generate record files to achieve traceability of historical parameters.

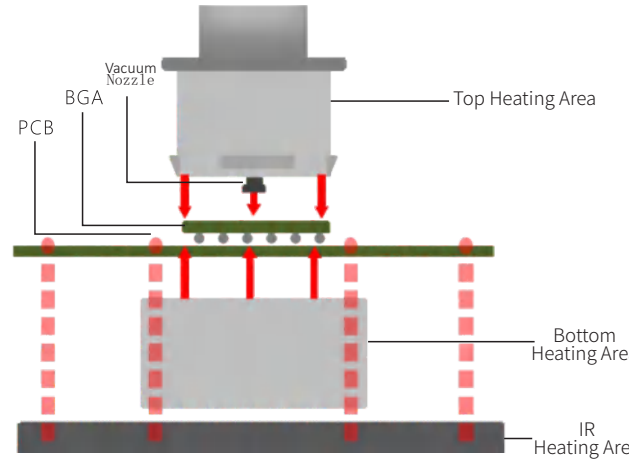


The operation interface is simple and fast, and a professional operation interface (system parameter setting, working mode setting, heating parameter setting, data recording, etc.) is set for different product characteristics, and there are Chinese and English interfaces to choose from.



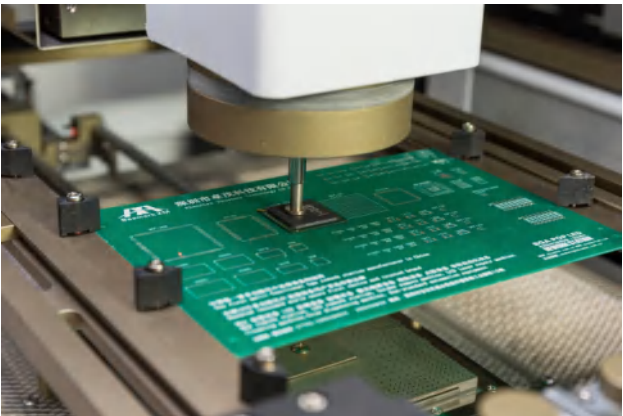
Three Independently Editable Heating Zones

Three heating zones independently programmed and controlled; convection hot air heating in the upper zone and the lower zone, the lower zone adopts a large area heating wire layout, suitable for the repair of larger BGA, and the infrared preheating zone uses the German imported medium wave ceramic infrared heating plate.



Stable Temperature Control

High-definition K-type thermocouple with accuracy up to $\pm 1^\circ\text{C}$, dynamic PID multi-loop closed control selective reflow soldering process. With intelligent temperature compensation, and automatic memory function.

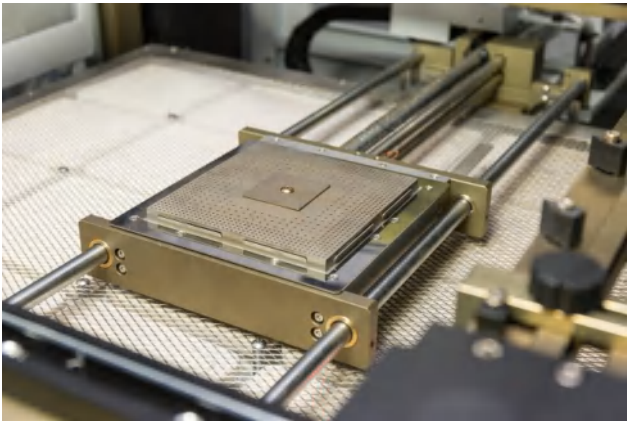


Bottom Heating System

The bottom preheating adopts the heating plate imported from Germany, and the built-in temperature measuring probe is more accurate, which effectively solves the heating temperature control effect. The bottom movable heating zone automatically moves with the head to improve the board rework efficiency.

Product Parameters

Model No.	R8650C
Power Supply	AC380V±10% 50/60Hz
Power	Total power 22KW Upper temperature zone (2KW) Lower temperature zone (2KW) Preheating temperature zone
PCB Size	(16KW) Other power (2KW) 660x600mm(Max) ; 10x10mm(Min)
BGA Chip Size	100x100mm(Max) ; 1x1mm(Min)
IR Temp. Zone Size	645×520mm
Motion Control	X/Y/Z
External Temp. Sensor	8PCS
Control System	Industrial PC+Servo motion control system
Display System	24 " SD display
Alignment System	2 million visual alignment system
Vacuum adsorption	Full automatic
Alignment Accuracy	±0.025mm
Temp. Control	K-type thermocouple(closed-loop), intelligent temperature compensation system with accuracy up to ±1°C
Feeding Device	Semi-automatic
Positioning	L-groove with universal fixture (shaped fixture can be customized)
Dimensions	L1235×W1215×H1850mm
Weight	993.5KG



Optional



PCB support fixture



BGA support frame



Nozzle



Vacuum Nozzle